

# BOND UPDATE

October 2024

#ThankYouVoters

# WALLER JUNIOR

PHASE 1 COMPLETION SUMMER 2023  
PHASE 2 COMPLETION SUMMER 2024



- Final Inspection passed and Certificate of Occupancy issued.
- Phase 2 was completed in August 2024.
- Punch list and deficiency corrective work continues in Phase 1 and 2.
- HVAC test & balance and Building Commissioning are in progress.
- Safety-security window film installation has started.

# STADIUM IMPROVEMENTS

---

- Stadium field lighting and large video board are complete.
- Sound System upgrades throughout the stadium are complete.
- Earthen berm behind the video board is 99% complete.
- Daikin Stadium signage package is in fabrication for late October installation.
- Chain-link fencing and gate replacement are planned.



# LOWE AND MCREAVY ELEMENTARY SCHOOLS



- Both campuses opened in August.
- Punch List work is ongoing and close to completion.
- Interior graphics package is in production.
- Dedication for Lowe is scheduled on October 13th.
- Dedication for McReavy is schedule on October 20th.

# LOWE ELEMENTARY



Front Entry





School Zone and Monument Signs

# MCREAVY ELEMENTARY



Front Entry





Signage



# AG SCIENCE FACILITY



- Wall paneling is finishing installation.
- MEP rough-in is 80% complete.
- Painting in exterior spaces is 80% completed.
- Windows and storefronts are being completed.
- Furniture and equipment has been ordered.



# Ag Barn



Front Elevation

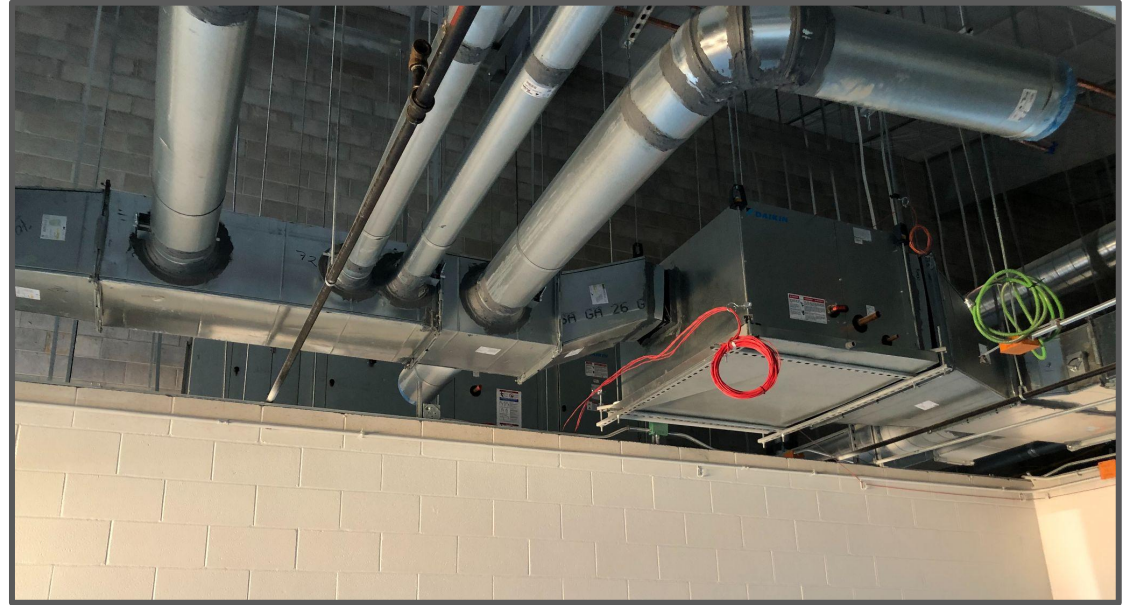
# Ag Barn



Show Arena



# Ag Barn



MEP above ceiling

# Ag Barn



Vet Tech & Animal Science Classrooms



# Ag Barn



Practice Arena and Animal Pens

# Ag Barn



Animal Wash & Grooming Spaces



# Ag Barn



Locker Areas





# ELEMENTARY #8



- Masons are installing exterior brick and stone.
- Interior wall framing is nearing completion and drywall installation has started.
- MEP overhead installations are ongoing.
- Roofing installation continues to progress.

# Elementary #8



Front Elevation

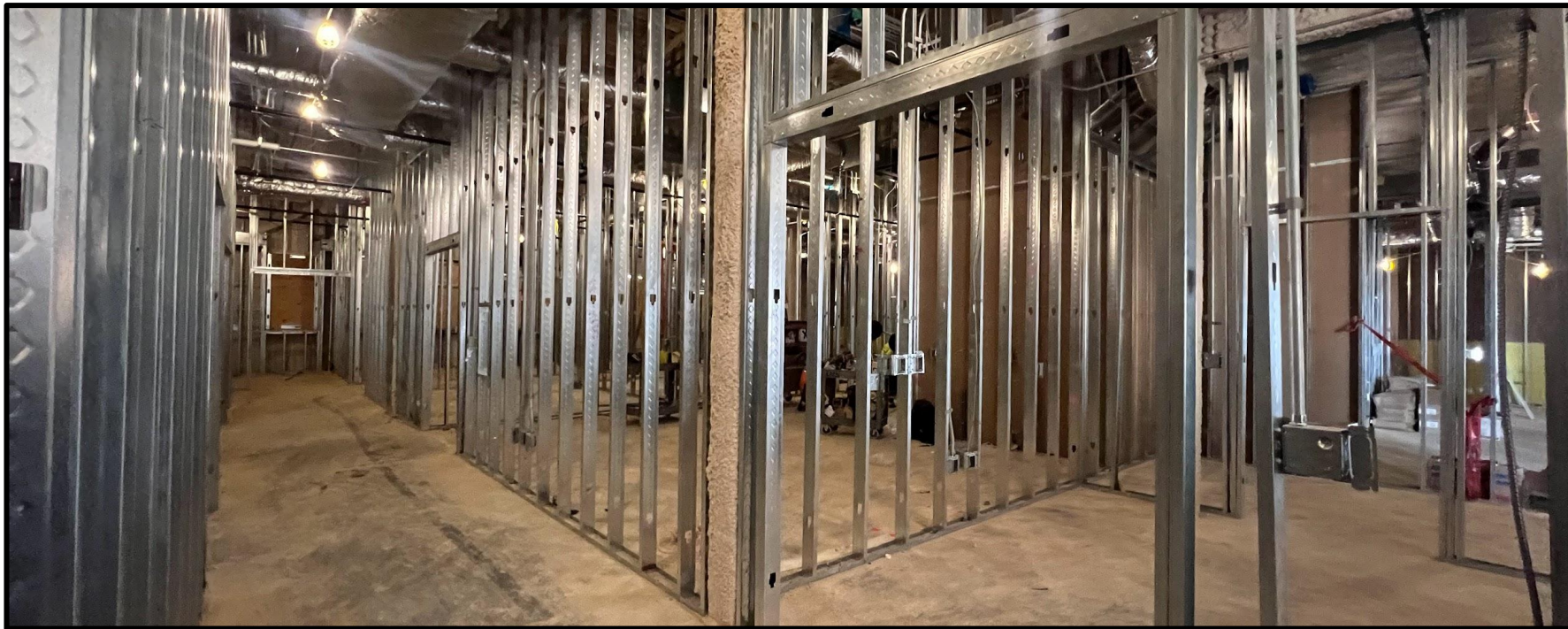


# Elementary #8



Classroom Corridors





Administration



# Elementary #8



Library

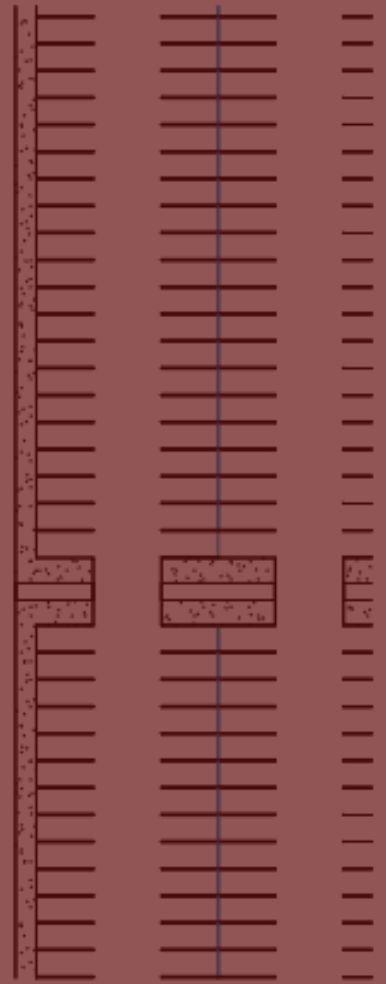
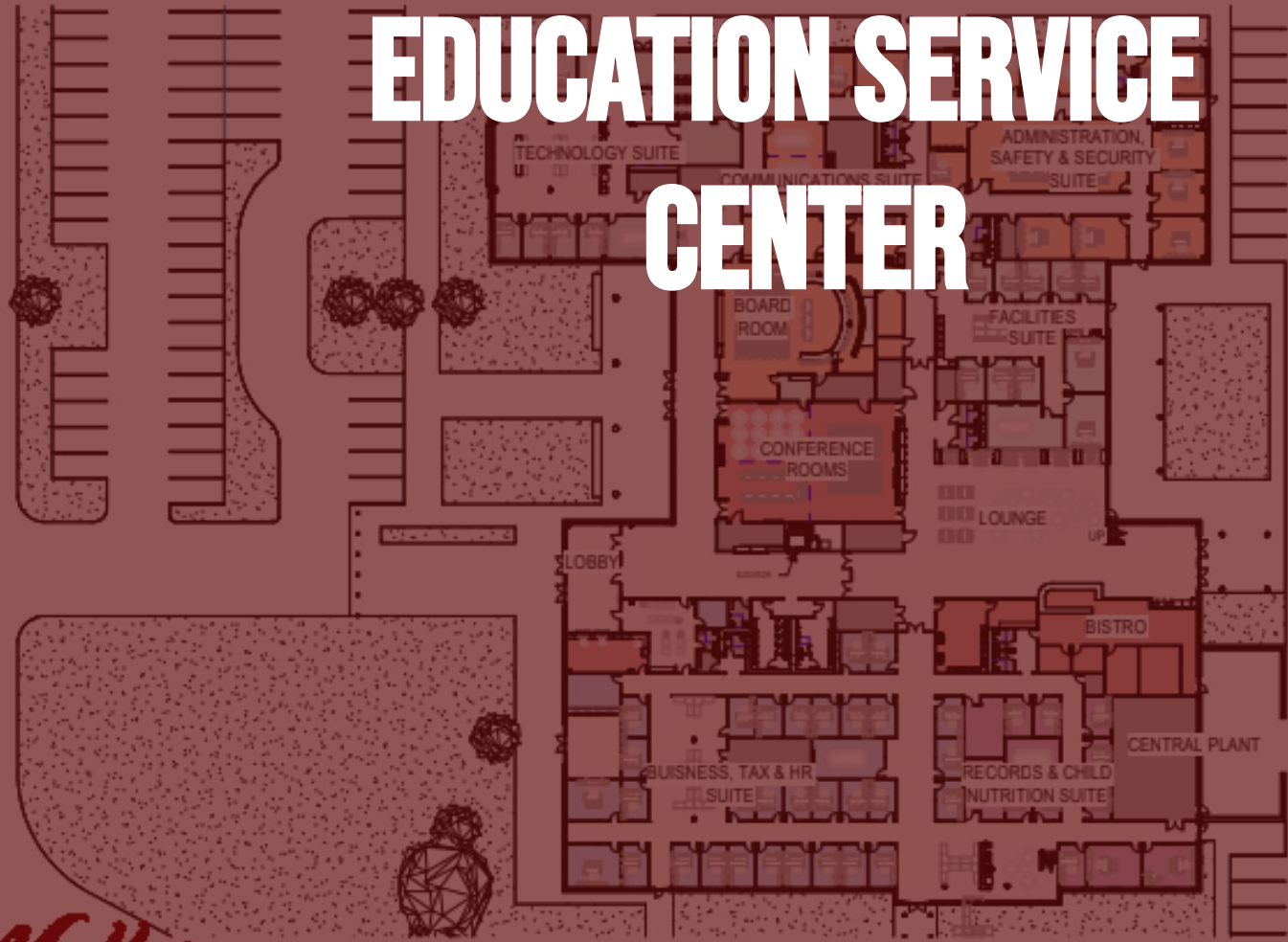




Cafeteria/Kitchen



# EDUCATION SERVICE CENTER





- Sitework continues on the ESC-Transportation-Ag-Elementary #8 project including light poles, paving, fencing, and landscaping at the detention pond.
- Exterior framing is nearing completion and roofing is in progress.
- Structure fireproofing is complete.
- Interior wall framing and MEP overhead are in progress.
- Air Handler Units are being installed.

# ESC-Ag-Elementary #8



Aerial View - Northeast Corner





Landscaping and Fencing







Front Elevation



Interior Framing







Mechanical work in progress





South Elevation

# ESC - TRANSPORTATION



Office and Bay Area





# ESC - TRANSPORTATION



Fueling Station





# PRIORITY 1 PROJECTS



# Priority 1 Improvement

---

- Reroof of Schultz JH and Roberts Road Elementary have begun.
- New FrontRow classroom sound system and campus PA installed.
- Safety film has been installed at all P1 campuses.
- Security fencing fabric installation has been completed at P1 campuses with gate hardware on order.
- Sliding marker boards installation at Jones ES have been completed.
- Security Signage installation has started at all the P1 campuses.
- Roberts Road front office demolition plan is being finalized.



# Priority 1 Improvement



Roofing

A photograph of a classroom filled with children of various ages, from young children to teenagers. They are all expressing excitement, with many having their arms raised in the air. They are seated at small, light-colored tables with blue chairs. The classroom has white walls, a tiled ceiling, and various educational posters and supplies visible in the background. The entire image is overlaid with a semi-transparent red filter.

# #ThankYouVoters

*Waller*  
Independent School District